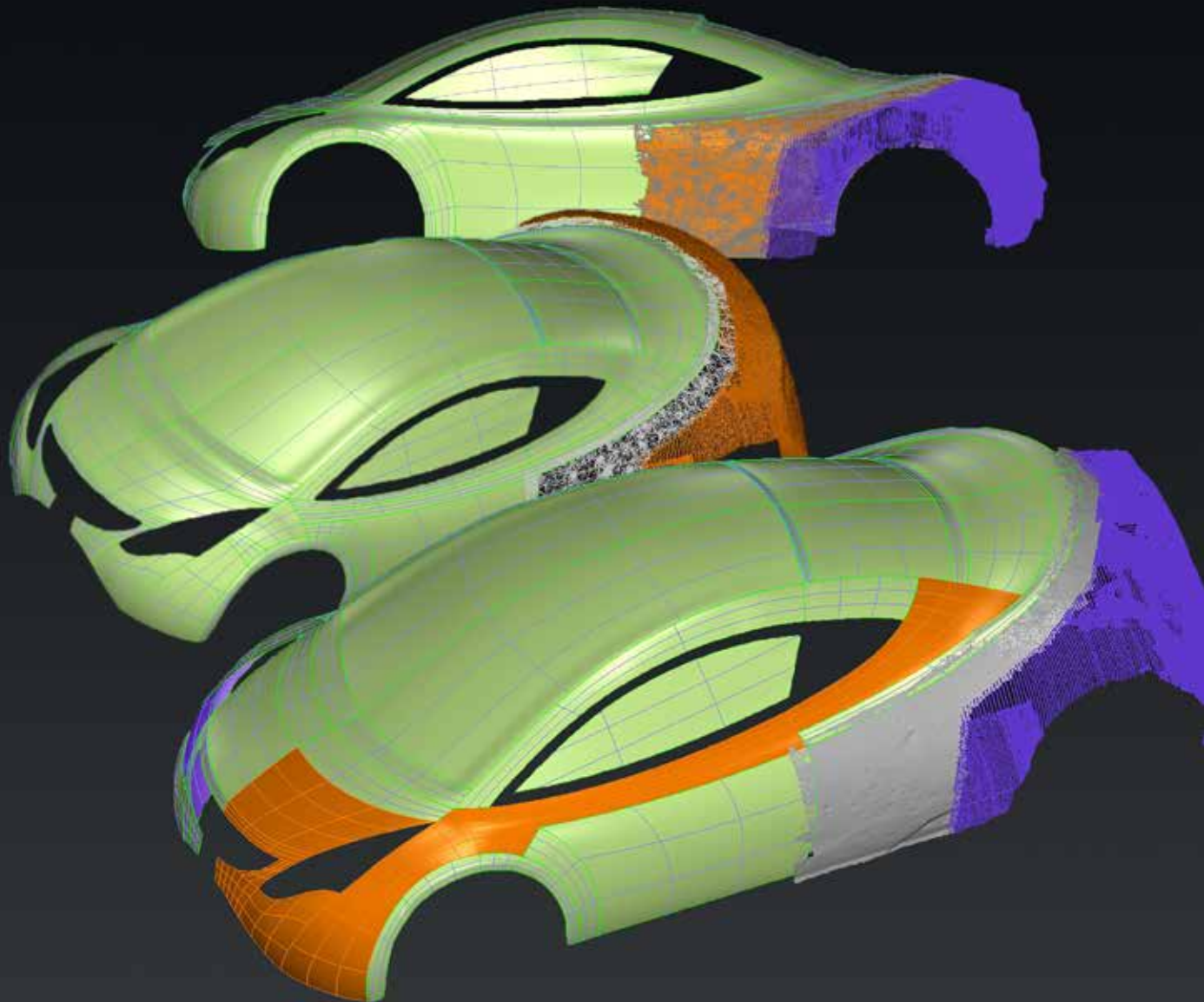




PC-DMIS Reshaper
for Portable Measuring Arms

pc·dmis®



PC-DMIS Reshaper is a powerful and intuitive 3D point handling software. Created with the aim of incorporating all of your 3D scanning needs into one simple and affordable platform, it can be used on-line with a **ROMER Absolute Arm** scanning system or as a standalone package. What's more, thanks to an easy to configure connection it can also work in tandem with PC-DMIS, the world's leading metrology software, creating a complete package capable of taking on the most complex measurement tasks.



From Measurement
and Inspection



Simple measurement of geometrical entities

Thanks to the ROMER Absolute Arm it's easy to make quick measurements of geometrical entities like cylinders, planes and holes, using either the touch probe or laser scanner. These entities can be included in a final measurement report or be exported into your CAD system.



Rapid Prototyping

With incredibly fast, yet intelligent meshing algorithms, it's now easier than ever before to mesh your scan data in minutes rather than hours, and make the resulting model completely watertight. Even large areas missing from the original scan that may be too difficult to complete with standard hole-filling can be completely reconstructed, while continuously respecting the surrounding form of your object.



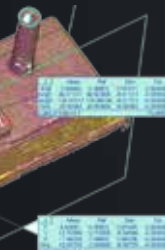
Reverse Engineering

Legacy components, tooling modification and product benchmarking are all instances that require the quick creation of CAD data from a physical part. Using feature-line extraction and edge-reconstruction PC-DMIS Reshaper can not only mesh your scan data quickly, but also create accurate NURBS models that consider all-important surface details.



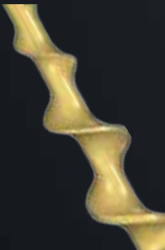
Quality Control

Your 3D scan data can be compared in real-time against a nominal CAD model, creating a full 3D error map that's easy to understand even for those with no metrology experience. Incorporating these error maps into a final measurement report makes it easy to share the results with your colleagues, customers and suppliers.



Animation and Visualization

Texture mapping is now a fundamental part of how designers, architects and animators visualize their projects. PC-DMIS Reshaper allows you to import any image and project it easily onto your mesh data. Furthermore, PC-DMIS Reshaper is the only software in this price range that allows you to totally parameterize your mesh, as if it was an editable CAD surface. Just click and drag on the control points with the mouse to arrive at a desired shape.



Features and Benefits

- Real-time point filtering that can be executed during the scan
- Real-time point rendering, making it easier to determine areas yet to be scanned
- Full probe functionality
- Measurement of geometrical entities with either the arm touch-probe or the laser scanner
- Point cloud reduction for larger files
- Rapid, curvature-sensitive meshing operations
- Full mesh editing operations, including hole-filling, smoothing, mesh reduction and mesh reconstruction
- Sharp-edge reconstruction
- Feature-line extraction
- Cross-sectioning operations
- Rapid CAD surfacing capability for creating accurate NURBS surfaces
- Direct import of CAD models for object-to-CAD comparisons
- Real-time comparison of the scan data to the CAD model

Export formats

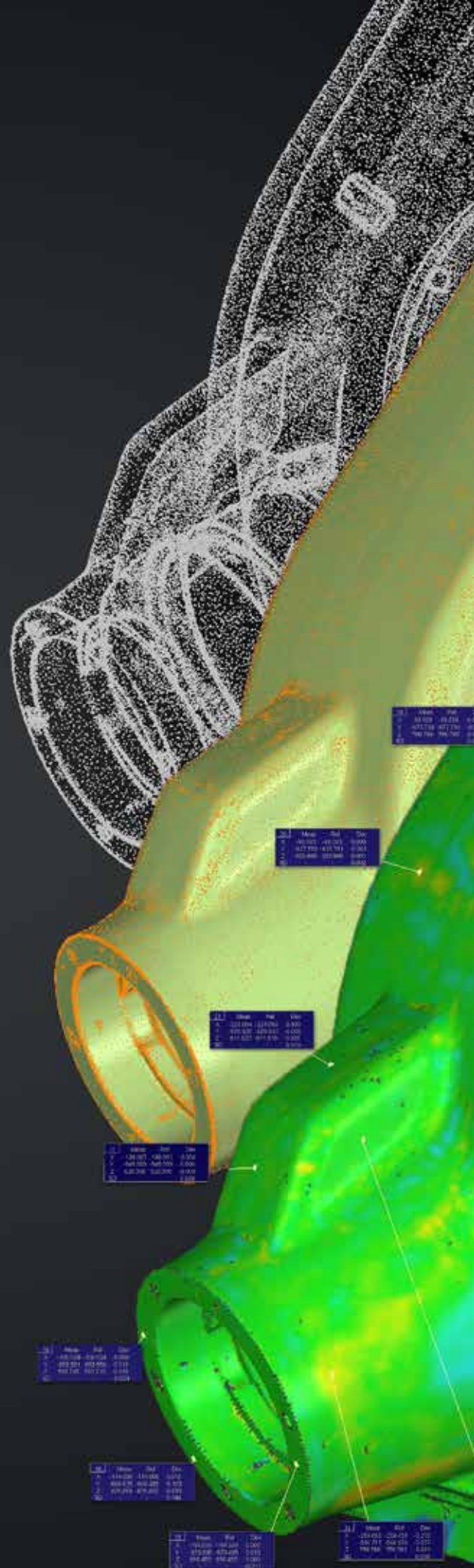
for geometrical entities:	iges, dxf
for point cloud data:	ascii, txt
for mesh data:	obj, stl, dxf
for cross-section data:	iges, dxf
for CAD surface data (NURBS):	iges, step
for measurement reports:	pdf, html

Import formats

for nominal CAD models:	iges, step
-------------------------	------------

System Requirements

- Windows XP Professional or Windows 7
- NVIDIA Quadro graphics card
- 2GB RAM





Hexagon Metrology is part of the Hexagon AB Group and includes leading metrology brands such as Brown & Sharpe, Cognitens, DEA, Leica Geosystems (Metrology Products), Leitz, m&h Inprocess Messtechnik, Optiv, PC-DMIS, QUINDOS, ROMER and TESA. Hexagon Metrology brands represent an unrivaled global installed base of millions of Coordinate Measuring Machines (CMMs), portable measuring systems and handheld instruments, and tens of thousands of metrology software licenses. Hexagon Metrology empowers its customers to fully control manufacturing processes that rely on dimensional precision, ensuring that products manufactured precisely conform to the original product design. The company offering of machines, systems and software is complemented by a wide range of product support, aftermarket and value-added services.

www.hexagonmetrology.com

© 2011 Hexagon Metrology – Part of Hexagon Group
All rights reserved.
Printed in Germany. December 2011

